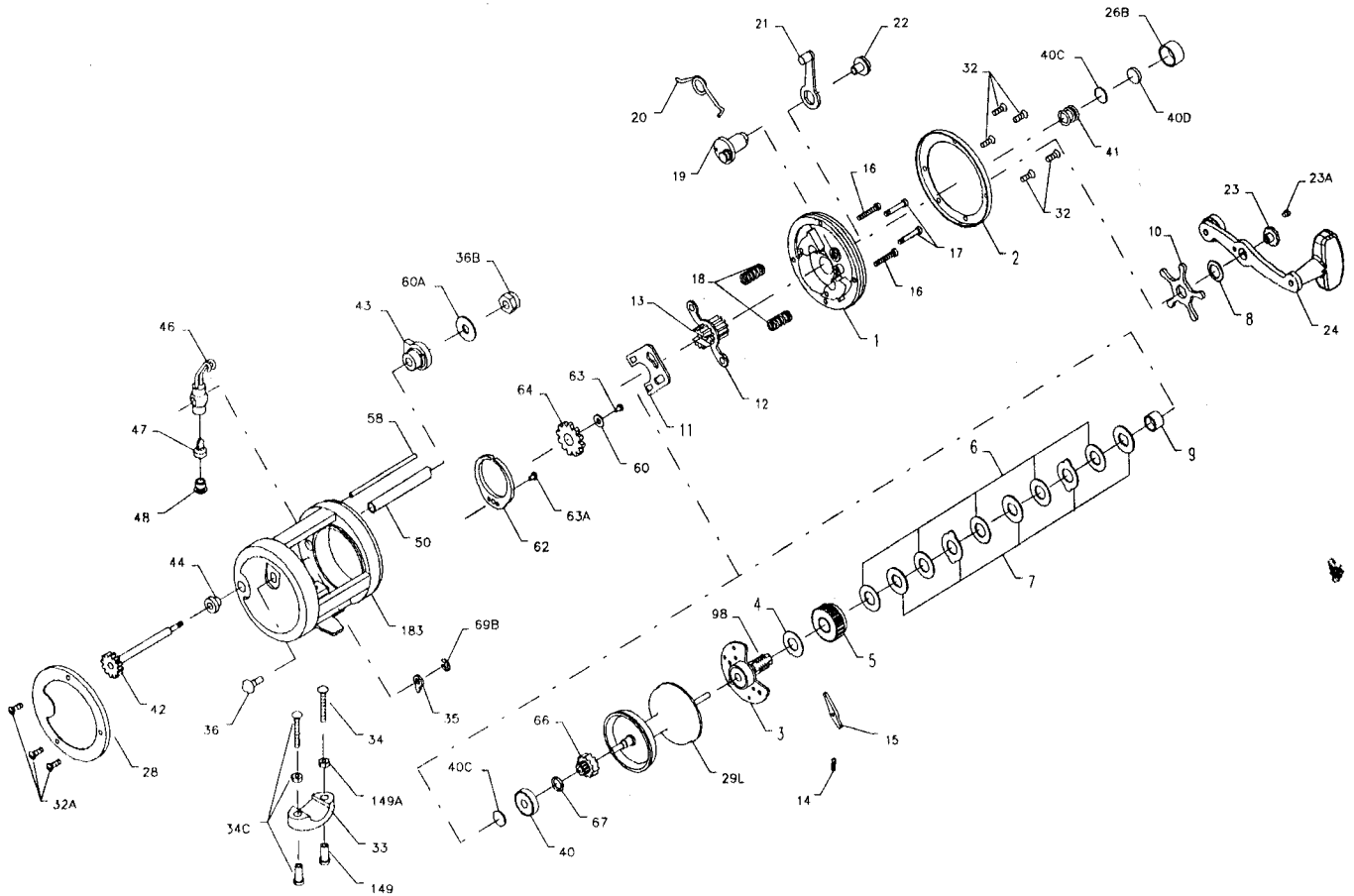




PARTS AND PRICE LIST FOR MODEL 330GTI



Key No.	Part No.	Description	Price	Key No.	Part No.	Description	Price
1	001 330	Right Side Plate	\$5.50	*33R-200		Ringed Rod Clamp (Optional)	\$6.25
2	002 330	Right Side Ring	6.10	34	034 045	Clamp Screw Only	1.00
3	003 330	Bridge Assembly	19.25	34C	034C045	Clamp Screw w/Nuts	2.50
4	004 349	Fiber Washer	.45	35	035 320	Click Tongue	1.25
5	005N320	Main Gear	6.90	36	036 320	Click Button	1.10
6	006 320	Friction Drag Washer (5 req.)	1.10	36B	036 700	Worm Shaft Nut	.90
7	007C970	Metal Drag Washer (Set of 5)	4.50	40	040 320	Ball Bearing	7.50
8	008 349	Tension Spring	.90	40C	040C320	Metal Thrust Washer (2 req.)	.40
9	009 320	Spacing Sleeve	1.90	40D	040D320	Rubber Thrust Washer	.40
10	010 349	Star Drag	4.40	41	041 330	Right Side Thrust Spring	.45
11	011 330	Eccentric Jack	1.25	42	042 330N	Worm	5.60
12	012 060	Pinion Yoke	.90	43	043 330	Right Side Worm Bearing	1.00
13	013N330	Pinion Gear	4.00	44	044 330	Left Side Worm Bearing	1.00
14	014 330	Dog Spring	.50	46	046 330N	Line Guide Carriage	5.40
15	015 330	Dog	1.05	47	047 320	Pawl	1.35
16	016 113H	Lower Bridge Screw (2 req.)	.50	48	048 330N	Pawl Cover Screw	.95
17	017 113H	Upper Bridge Screw (2 req.)	.50	50	050N330	Worm Shield	2.25
18	018 060	Clutch Spring (2 req.)	.45	58	058 330	Line Guide Post	1.90
19	019 330	Eccentric Cam	2.15	60	060 320	Idler Gear Washer	.40
20	020 155	Eccentric Spring	.45	60A	060 320	Worm Bearing Washer	.40
21	021 309	Eccentric Lever Assembly	1.70	62	062 209	Click Spring	1.50
22	022 060CH	Eccentric Screw	.55	63	063 500S	Idler Gear Screw	.80
23	023 114	Handle Assembly Screw	2.65	63A	063 330	Click Spring Screw	.50
23A	110 060	Handle Lock Screw	.45	64	064 330	Idler Gear	1.50
24	024 330	Handle Assembly	8.80	66	066 320	Spool Gear Click Ratchet	1.60
26B	026B320	Spool Tension Control Cap	1.75	67	067 009	Spool Gear Lock Ring	.40
28	028 330	Left Side Ring	6.40	69B	069B600	Retaining Ring Click Button	.90
29L	029L330	Aluminum Spool	17.10	98	098 320	Gear Sleeve	5.00
32	032 017	R.S. Plate Screw (5 req.)	.40	149	149 045	Clamp Nut Only	1.00
32A	032 310	L.S. Ring Screw (3 req.)	.50	149A	149 200	Hex Nut Only	.50
33	033 113	Rod Clamp	4.00	183	183 330	Frame	28.40